



JCOMM BCMS integrated branch circuit monitoring system

Eaton's JCOMM BCMS is an integrated power monitoring system for retrofit applications designed to extend branch circuit monitoring capabilities to legacy and third party power distribution equipment.

Engineered to support the demanding installation requirements of contractors

- **Robust** pre-labeled cabling
- **Reduced** installation time — plug and play connectors vs. traditional 6' or 10' whips on a split-core current transformer
- **Engineered** and tested before delivery to job site
- **Compact** packaging for common installation platforms

Product Features and values

- **Pre-engineered** harness saves up to 75% on installation time vs. other solutions
- **Retro-fittable** on any power distribution equipment that contains panelboards
- **Monitors and collects** data up to (4) 84-pole panelboards
- **Monitors** up to (4) secondary main breakers
- **Plug and play** solution

Product features and benefits

Fully integrated enclosed solution

The JCOMM BCMS comes with a fully integrated metal enclosure reducing the cost and complexity of installation and mounting.

Intuitive information display (optional)

The JCOMM BCMS supports Eaton's latest WaveStar color touchscreen display for easy navigation and visualization of metering data and alerts.

Monitor key performance metrics

The JCOMM BCMS collects and reports on all key electrical performance metrics including voltage, current, power, frequency, energy and power factor.

Accurate power measurements

The JCOMM BCMS is capable of measuring and reporting on power and energy consumption to within 1% error making it one of the most accurate solutions in the market.

Broad panelboard configuration support

The JCOMM BCMS can support the wide variety of panelboard configurations found across equipment and facilities.

Extensive equipment support

The JCOMM BCMS is capable of supporting all of your equipment from Remote Power Panels (RPP), Power Distribution Units (PDU) to stand alone panelboards from Eaton or other OEM manufacturers.

Multiple integration options

The JCOMM BCMS supports multiple integration options to simplify connectivity to your building management system, energy management system or data center infrastructure management solutions.



Monitoring options



JCOMM with 7" CTS (color touch screen)

- Monitors up to (4) 84-pole panelboards per JCOMM
- Real-time data collection



JCOMM without monitor

- Integrated Modbus RTU, TCP I/P and SNMP protocols

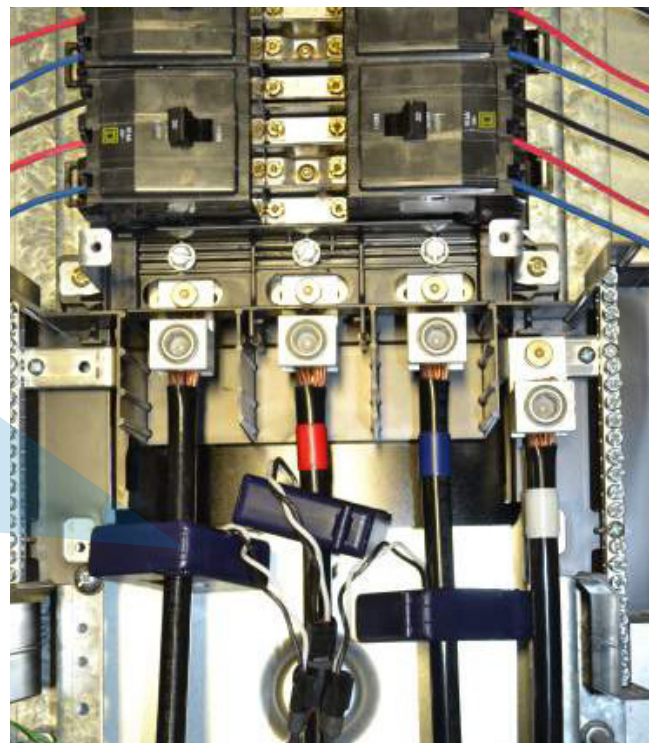
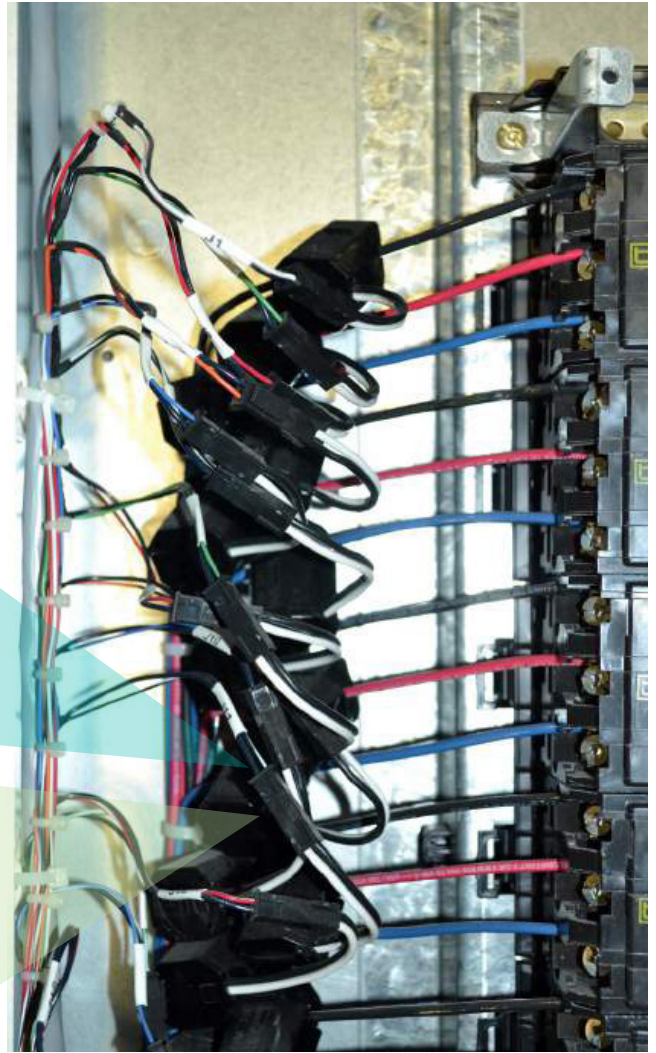
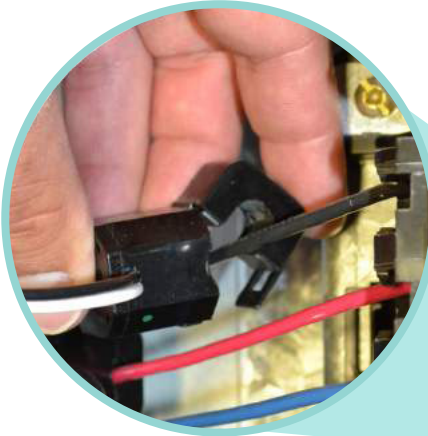


10" WaveStar® BCMS Hub

- Value priced option
- Can be integrated with WaveStar BCMS Hub for a single point of data collection
- Monitors up to 70 downstream BCMS devices
- Integrated Modbus RTU and Modbus TCP I/P

Split-core CT

- Split-core CT's allow branch circuit monitoring without disconnecting critical loads
- CTs can be added or removed at any time to accommodate changing panel configurations
- Plug and play solution allows you to snap on a CT and begin monitoring instantly



Secondary main CTs

- Available in 250 and 400A
- Accommodates A, B, C, N and G on one pre-engineered harness
- Plug and play solution allows you to snap on a CT and begin monitoring instantly

Technical specifications

Ratings

Input	100–277V 50 / 60 Hz
-------	---------------------

Safety standards

ETL Listed to UL and CSA standards

Dimensions

20"W x 10"H x 8"D

Mounting options

Wall, RPP, PDU, other power distribution equipment
--

Operating conditions

Operating temperature	+32° to 140°F (0° to 60°C)
-----------------------	----------------------------

Storage temperature	-33° to +158°F (-36° to +70°C)
---------------------	--------------------------------

Audible noise	≤ 45dBA
---------------	---------

Relative humidity	0% to 95% non-condensing
-------------------	--------------------------

Operating altitude	Up to 9,800 ft. (3,000m)
--------------------	--------------------------

Monitoring

Monitor	7" WaveStar color touch monitor
---------	---------------------------------

Communications	Serial RS-485 Modbus® RTU; Standard Modbus TCP/IP or SNMP communications
----------------	---

Compatible distribution panelboards/sub-feed breakers

Brands	Brands: Eaton, SquareD, Schneider Electric, ABB, GE, Siemens etc.
--------	---

Style	NEC, IEC, finger-safe
-------	-----------------------

Number of poles	Up to 168
-----------------	-----------

Panel CTs	60A standard, 100A (optional)
-----------	-------------------------------

Main CT Amperage	225A, 400A
------------------	------------

Voltage	Up to 400V
---------	------------

Testing

Eaton is dedicated to providing customized solutions to meet the specific requirements of your application.

Centralized WaveStar BCMS Hub

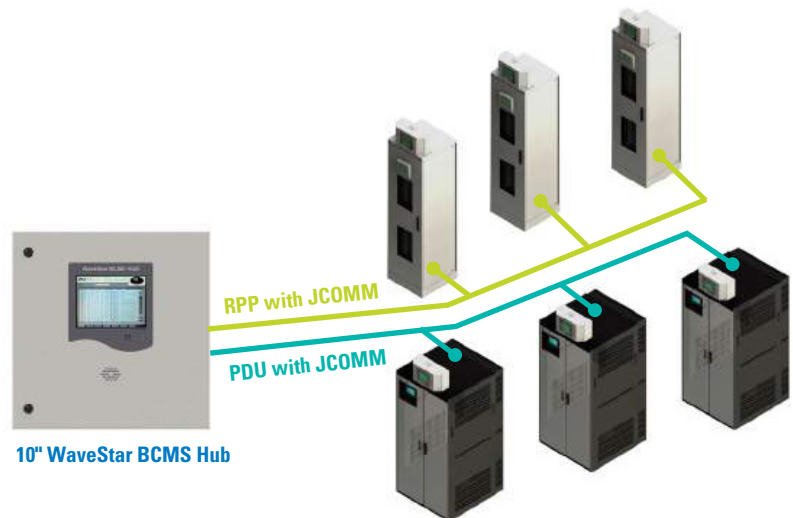
Eaton's WaveStar BCMS Hub can collect information from downstream BCMS-enabled power quality products in a data center. Installation does not have to be inside the data center room and can communicate via multiple protocols to BMS and DCIM Systems.

Customization

Eaton is dedicated to providing customized solutions to meet the specific requirements of your application. Contact us at +1.800.225.4838 for further information and support.

Service and support

After your equipment has been installed, call on the Eaton service team, at 1.800.225.4838, for 24/7 support.



For more information, please visit:
Eaton.com/jcomm

Eaton
1000 Eaton Boulevard
Cleveland, OH 44122
United States
Eaton.com

© 2021 Eaton
All Rights Reserved
Publication No. BR153149EN / GG
April 2021

Eaton is a registered trademark.

All other trademarks are property of their respective owners.

Follow us on social media to get the latest product and support information.

