

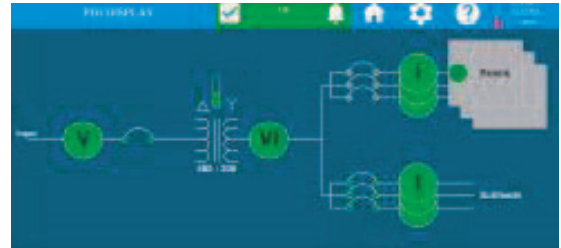
Service upgrades and offerings

Transform. Distribute. Monitor.



WaveStar® color

- Upgrades legacy M4 POU, 8212 RPP and POU monochrome displays
- 7-inch color touch screen
- MOOBUS RTU, MOOBUS TCP I/P and SNMP protocols
- 1% revenue grade



WaveStar® Infinity

- Upgrades legacy M4 POU, 8212 RPP and monochrome displays
- Full system upgrade—all circuit boards are replaced
- 7-inch color touch screen with web-based interface
- MOOBUS RTU, MOOBUS TCP I/P and SNMP protocols
- Sub-second monitoring for OCIM and BMS
- 1% revenue grade



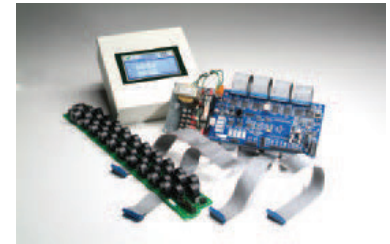
JCOMM® BCMS retrofit

- Upgrades legacy M4 POU, 8212 RPP and POU monochrome displays
- 7-inch color touch screen
- MOOBUS RTU, MOOBUS TCP I/P and SNMP protocols
- 1% revenue grade



Subfeed BCMS retrofit

- Pre-engineered harness saves up to 75% on installation time vs other solutions
- Retro-fittable on any power distribution equipment that contains subfeed breakers
- Monitors & collects data up to (14) 250A, 400A or 600A breakers
- 1% revenue grade

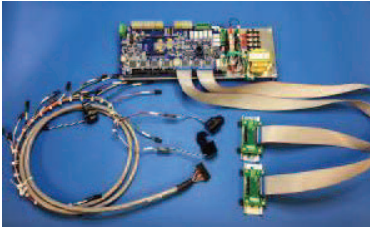


Branch circuit monitoring – solid-core kits

- 120V or 230V kits
- Monitors up to 84 poles per kit
- SqO™, GE, Eaton & Cuttler-Hammer kits available
- Voltage monitoring
- kWh data for each individual breaker
- 1% revenue grade



Powering Business Worldwide



Branch circuit monitoring – split-core kits

- 120V or 230V kits
- Monitors up to 84 poles per kit
- SqO™, GE, Eaton and Cuttler-Hammer kits available
- Voltage monitoring
- kWh data for each individual breaker
- 1 % revenue grade



Load bank connections for busway installation

Eaton offers a temporary load bank connection for your PowerWave2 Busway. These rental units connect to your load bank via cam locks and easily help you create heat and load to commission your busway runs.



Breakers

Eaton offers branch and subfeed breakers at competitive prices. All in stock breakers ship the same day!



Sidecar upgrades

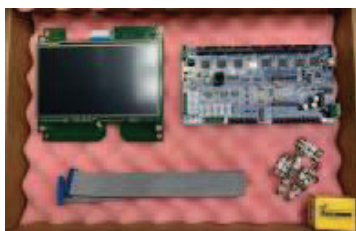
Is distribution density becoming an issue with your existing equipment? Release your transformer’s full potential by adding a sidecar upgrade. Eaton has PDI re-engineered sidecars equipped with panelboards, subfeed breakers or a mixture of both. Whether you have an existing sidecar or looking for additional output for your current PDU, Eaton can tailor a solution to maximize your power density and minimize footprint and downtime.

Features and benefits

- 100% rated breakers
- Lexan barrier and enhanced ventilation
- Factory engineered solution
- Adds additional capacity for existing PDUs
- Reduces sidecar heat by –22°F
- Field installation labor reduced by 2 hours
- Increased air flow by compartmentalization

Options

- 120V or 230V kits
- Monitors up to 84 poles per kit
- SqO™, GE, Eaton and Cuttler-Hammer kits available
- Voltage monitoring
- kWh data for each individual breaker
- 1 % revenue grade



Spare parts kits

Speed up your mean time to repair and eliminate downtime with your own local spare parts kit. Eaton offers three levels of spare parts kits for all PDI core products.

About Eaton and PDI

With the acquisition of Power Distribution, Inc., Eaton has significantly enhanced its ability to design, manufacture and service mission-critical power distribution, static switching and power monitoring equipment for data center, alternative energy, industrial and commercial customers around the world.

For more information, please visit:
Eaton.com/bcmskit

Eaton
 1000 Eaton Boulevard
 Cleveland, OH 44122
 United States
 Eaton.com

© 2021 Eaton
 All Rights Reserved
 Printed in USA
 Publication No. BR155047EN / GG
 March 2021

Eaton is a registered trademark.

All other trademarks are property of their respective owners.

Follow us on social media to get the latest product and support information.

