

Service upgrades & offerings

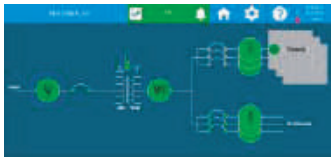
Monitoring upgrades

WaveStar® Color



- Upgrades legacy M4 PDU, 8212 RPP & PDU monochrome displays
- 7-inch color touch screen
- MODBUS RTU, MODBUS TCP I/P & SNMP protocols
- 1% revenue grade

WaveStar® Infinity



- Upgrades legacy M4 PDU, 8212 RPP & Monochrome displays
- Full system upgrade - all circuit boards are replaced
- 7-inch color touch screen with web-based interface
- MODBUS RTU, MODBUS TCP I/P & SNMP protocols
- Sub-second monitoring for DCIM & BMS
- 1% revenue grade

JCOMM® BCMS retrofit



- Pre-engineered harness saves up to 75% on installation time vs other solutions
- Retro-fittable on any power distribution equipment that contains panelboards
- Monitors & collects data up to (4) 42 pole panelboards
- Monitors up to (4) secondary main breakers
- Plug and play solution
- 1% revenue grade

Subfeed BCMS retrofit



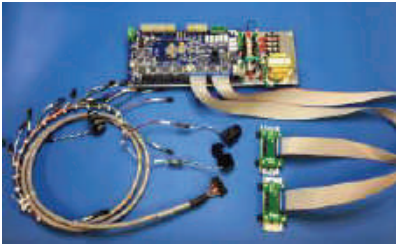
- Pre-engineered harness saves up to 75% on installation time vs other solutions
- Retro-fittable on any power distribution equipment that contains subfeed breakers
- Monitors & collects data up to (14) 250A, 400A or 600A breakers
- 1% revenue grade

Branch Circuit Monitoring - solid-core kits



- 120V or 230V kits
- Monitors up to 84 poles per kit
- SqD™, GE, Eaton & Cuttler-Hammer kits available
- Voltage monitoring
- kWh data for each individual breaker
- 1% revenue grade

Branch Circuit Monitoring - split-core kits



- 120V or 230V kits
- Monitors up to 84 poles per kit
- SqD™, GE, Eaton & Cuttler-Hammer kits available
- Voltage monitoring
- kWh data for each individual breaker
- 1% Revenue Grade

Load bank connections for busway installations



Eaton offers a temporary load bank connection for your PDI PowerWave2 Busway. These rental units connect to your load bank via cam locks & easily help you create heat and load to commission your busway runs.

Breakers



Eaton offers branch & subfeed breakers at competitive prices. All in stock breakers ship the same day!

Side car upgrades



Is distribution density becoming an issue with your existing equipment? Release your transformer's full potential by adding a sidecar upgrade. Eaton has PDI pre-engineered sidecars equipped with panelboards, subfeed breakers or a mixture of both. Whether you have an existing sidecar or looking for additional output for your current PDU, Eaton can tailor a solution to maximize your power density and minimize footprint & downtime.

Features and benefits

- 100% rated breakers
- Lexan barrier & enhanced ventilation
- Factory engineered solution
- Adds additional capacity for existing PDUs
- Reduces sidecar heat by ~22°F
- Field installation labor re-duced by 2hrs
- Increased air flow by compartmentalization

Options

- 250A, 400A & 600A options
- Branch circuit monitoring
- Panelboard or Subfeed Breaker solutions
- 4 (42) circuit panelboards or up to 8 subfeed breakers
- OEM and third party solutions



Spare parts kits



Speed up your mean time to repair & eliminate downtime with your own local spare parts kit. Eaton offers three levels of spare parts kits for all PDI core products.

About Eaton and PDI

With the acquisition of Power Distribution, Inc., Eaton has significantly enhanced its ability to design, manufacture and service mission-critical power distribution, static switching and power monitoring equipment for data center, alternative energy, industrial and commercial customers around the world.



Eaton
1000 Eaton Boulevard
Cleveland, OH 44122
United States
Eaton.com

© 2020 Eaton
All Rights Reserved
Printed in USA
Publication No. PA026006EN/MCG
January 2020

Eaton is a registered trademark.

All other trademarks are property of their respective owners.

For more information please visit:
www.pdicorp.com

Follow us on social media to get the latest product and support information.

