

Service Upgrades & Offerings

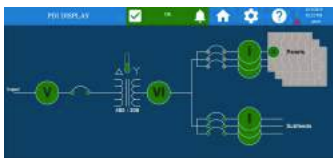
Monitoring Upgrades

WaveStar Color



- Upgrades legacy M4 PDU, 8212 RPP & PDU Monochrome displays
- 7" color touch screen
- MODBUS RTU, MODBUS TCP I/P & SNMP Protocols
- 1% Revenue Grade

WaveStar Infinity



- Upgrades legacy M4 PDU, 8212 RPP & Monochrome displays
- Full system upgrade - all circuit boards are replaced
- 7" color touch screen with web based interface
- MODBUS RTU, MODBUS TCP I/P & SNMP Protocols
- Sub-second monitoring for DCIM & BMS
- 1% Revenue Grade

JCOMM® BCMS Retrofit



- Pre-engineered harness saves up to 75% on installation time vs other solutions
- Retro-fittable on any power distribution equipment that contains panelboards
- Monitors & collects data up to (4) 42 pole panelboards
- Monitors up to (4) secondary main breakers
- Plug & Play solution
- 1% Revenue Grade

Subfeed BCMS Retrofit



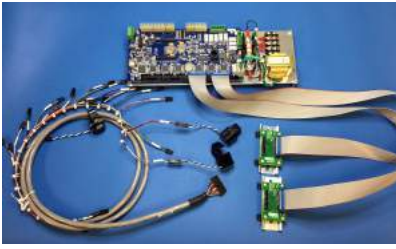
- Pre-engineered harness saves up to 75% on installation time vs other solutions
- Retro-fittable on any power distribution equipment that contains subfeed breakers
- Monitors & collects data up to (14) 250A, 400A or 600A breakers
- 1% Revenue Grade

Branch Circuit Monitoring - Solid-Core Kits



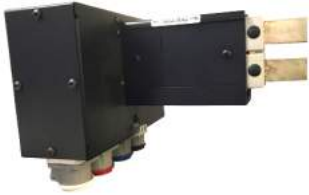
- 120V or 230V kits
- Monitors up to 84 poles per kit
- SqD, GE, Eaton & Cuttler-Hammer kits available
- Voltage monitoring
- kWh data for each individual breaker
- 1% Revenue Grade

Branch Circuit Monitoring - Split-Core Kits



- 120V or 230V kits
- Monitors up to 84 poles per kit
- SqD, GE, Eaton & Cuttler-Hammer kits available
- Voltage monitoring
- kWh data for each individual breaker
- 1% Revenue Grade

Load Bank Connections For Busway Installations



PDI offers a temporary load bank connection for your PDI PowerWave2 Busway. These rental units connect to your load bank via cam locks & easily help you create heat and load to commission your busway runs.

Breakers



PDI offers branch & subfeed breakers at competitive prices. All in stock breakers ship the same day!

Side Car Upgrades



Is distribution density becoming an issue with your existing equipment? Release your transformer's full potential by adding a sidecar upgrade. PDI has pre-engineered sidecars equipped with panelboards, subfeed breakers or a mixture of both. Whether you have an existing sidecar or looking for additional output for your current Power Distribution Unit, PDI can tailor a solution to maximize your power density and minimize footprint & downtime.

Features & Benefits

- 100% rated breakers
- Lexan barrier & enhanced ventilation
- Factory engineered solution
- Adds additional capacity for existing PDU's
- Reduces sidecar heat by ~22°F
- Field installation labor re-duced by 2hrs
- Increased air flow by compartmentalization



Options

- 250A, 400A & 600A options
- Branch circuit monitoring
- Panelboard or Subfeed Breaker solutions
- 4 (42) circuit panelboards or up to 8 subfeed breakers
- OEM & Third Party solutions

Spare Parts Kits



Speed up your mean time to repair & eliminate downtime with your own local spare parts kit. PDI offers three levels of spare parts kits for all PDI core products.

About Power Distribution, Inc. (PDI)

Power Distribution, Inc. (PDI) designs, manufactures, and services mission critical power distribution, static switching, and power monitoring equipment for corporate data centers, alternative energy, industrial and commercial customers around the world. For over four decades, PDI has served the data center and alternative energy markets providing flexible solutions with the widest range of products in the industry.



+1.800.225.4838 | +1.804.737.9880 | pdicorp.com