



JCOMM® BCMS Integrated Branch Circuit Monitoring System

PDI's JCOMM® BCMS is an integrated power monitoring system for retrofit applications designed to extend branch circuit monitoring capabilities to legacy and third party power distribution equipment.

Engineered to support the demanding installation requirements of contractors:

- Robust pre-labeled cabling.
- Reduced installation time - Plug and Play connectors vs traditional 6' or 10' whips on a split core CT.
- Engineered and tested before delivery to the job site.
- Compact packaging for common installation platforms.



Product Features/Values:

- Pre-engineered harness saves up to 75% on installation time vs other solutions.
- Retro-fittable on any power distribution equipment that contains panelboards.
- Monitors and collects data up to (4) 84-pole panelboards.
- Monitors up to (4) secondary main breakers.
- Plug & Play solution.

Product Features & Benefits

Fully Integrated Enclosed Solution

The JCOMM® BCMS comes with a fully integrated metal enclosure reducing the cost and complexity of installation and mounting.

Intuitive Information Display (optional)

The JCOMM® BCMS supports PDI's latest WaveStar color touchscreen display for easy navigation and visualization of metering data and alerts.

Monitoring of Key Performance Metrics

The JCOMM® BCMS collects and reports on all key electrical performance metrics including voltage, current, power, frequency, energy and power factor.

Accurate Power Measurements

The JCOMM® BCMS is capable of measuring and reporting on power and energy consumption to within 1% error making it one of the most accurate solutions in the market.

Broad Panelboard Configuration Support

The JCOMM® BCMS is capable of supporting the wide variety of panelboard configurations found across equipment and facilities.

Extensive Equipment Support

The JCOMM® BCMS is capable of supporting all of your equipment from Remote Power Panels (RPP), Power Distribution Units (PDU) to stand alone panelboards from PDI or other OEM manufacturers.

Multiple Integration Options

The JCOMM® BCMS supports multiple integration options to simplify connectivity to your Building Management System, Energy Management System or Data Center Infrastructure Management solutions.



Monitoring Options

JCOMM® with 7" CTS (Color Touch Screen)



- Monitors up to (4) 84 pole panel boards per JCOMM.
- Real time data collection.
- Integrated MODBUS RTU, TCP I/P & SNMP protocols.

JCOMM® without monitor



- Value priced option.
- Can be integrated with WaveStar BCMS Hub for a single point of data collection.

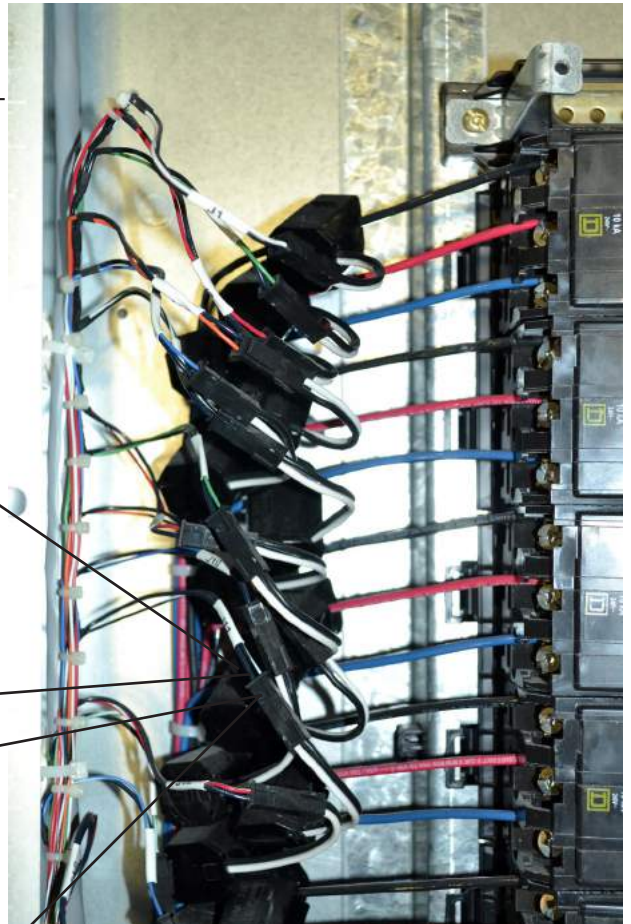
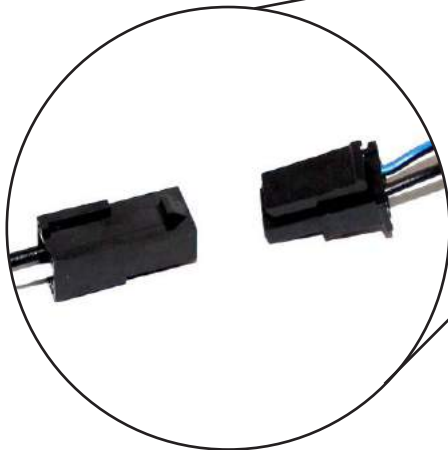
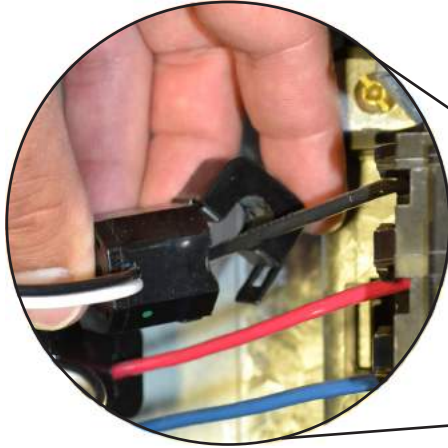
10" WaveStar® BCMS Hub



- Monitors up to 70 downstream BCMS devices.
- Integrated MODBUS RTU & Modbus TCP I/P.

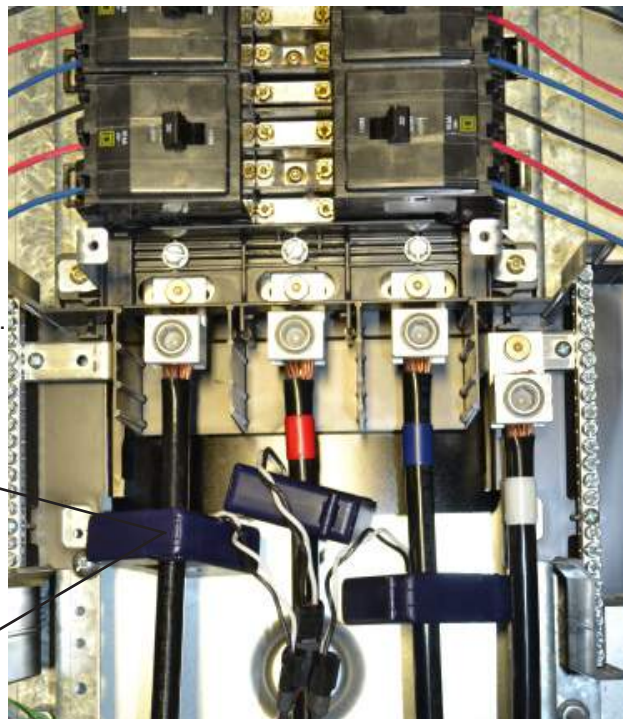
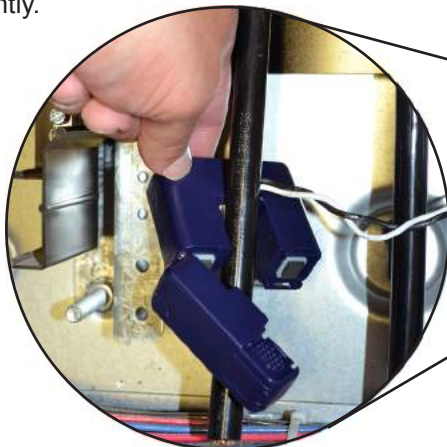
Split Core CT

- Split core CT's allow branch circuit monitoring without disconnecting critical loads.
- CT's can be added or removed at any time to accommodate changing panel configurations.
- Plug & Play solution allows you to snap on a CT and begin monitoring instantly.



Secondary Main CT's

- Available in 250 & 400A.
- Accommodates A, B, C, N and G on one pre-engineered harness.
- Plug & Play solution allows you to snap on a CT and begin monitoring instantly.



JCOMM BCMS

Product Profile

Ratings

- Input: 100-277V 50/60Hz

Safety Standards

- ETL Listed to UL and CSA standards

Dimensions:

- 20"W x 10"H x 8"D

Mounting Options:

- Wall
- PDU
- RPP
- Other power distribution equipment

Operating Conditions

- Storage Temperature: -33° to +158°F (-36° to +70°C)
- Operating Temperature: +32° to 140°F (0° to 60°C)
- Audible Noise: ≤ 45dBA
- Relative humidity: 0% to 95% non-condensing
- Operating Altitude: Up to 9,800 ft. (3,000m)

Monitoring

- Monitor: 7" WaveStar® color touch screen
- Communications: Serial RS-485 Modbus® RTU; Standard Modbus® TCP/IP or SNMP communications.

Compatible Distribution Panelboards/Sub-Feed Breakers

- Brands: SquareD, Schneider Electric, ABB, GE, Siemens etc.
- Style: NEC, IEC, finger-safe
- Number of Poles: Up to 168
- Panel CT's 60A standard - 100A (optional)
- Main CT Amperage: 225A, 400A
- Voltage: Up to 400V

Customization

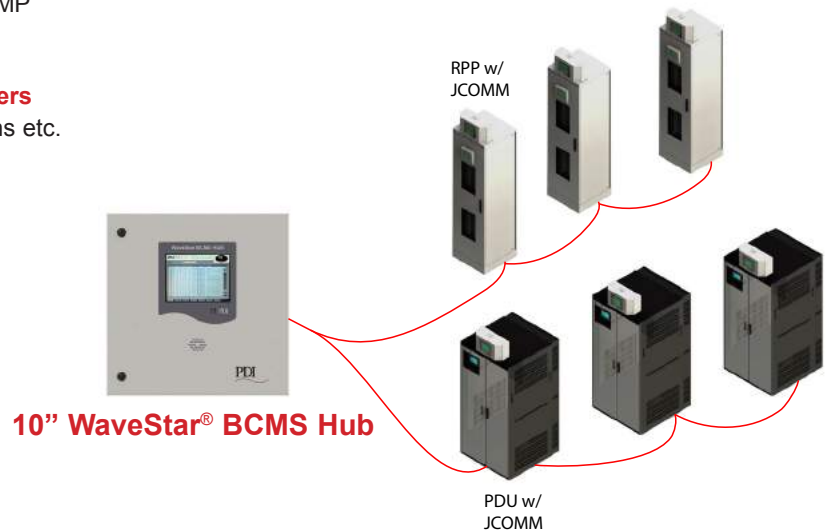
PDI is dedicated to providing customized solutions to meet the specific requirements of your application. Contact us at +1.800.225.4838 for further information and support.

PDI Service and Support

After your equipment has been installed, call on the PDI service team for 24/7 support. With four decades of mission critical power experience and seasoned factory-trained service staff, PDI Global Services can maximize the benefit of your equipment investment.

Centralized WaveStar® BCMS Hub

PDI's WaveStar® BCMS Hub can collect information from downstream BCMS-enabled power quality products in a data center. Installation can be performed outside the data center room with the ability to communicate via multiple protocols to BMS and DCIM Systems.



About Power Distribution, Inc. (PDI)

Power Distribution, Inc. (PDI) designs, manufactures, and services mission critical power distribution, static switching, and power monitoring equipment for corporate data centers, alternative energy, industrial and commercial customers around the world. For over four decades, PDI has served the data center and alternative energy markets providing flexible solutions with the widest range of products in the industry.



Power Distribution, Inc.

4200 Oakleys Court | Richmond, VA 23223 | T: +1 800.225.4838 | F: +1 804.737.1703 | www.pdicorp.com